



**OIL PAINTERS of AMERICA®**  
Dedicated to the Preservation of Representational Art

# **NATIONAL CONVENTION**

## **AUGUST 24 – 29, 2021**

### **SANTA FE, NEW MEXICO**

#### **MONDAY, AUGUST 23 & TUESDAY, AUGUST 24**

Why not make it a full week in Santa Fe? Check out our pre-convention workshops (page 9) being offered by Santa Fe residents and OPA members: Michele Byrne, Louis Escobedo OPAM, and Albert Handell OPAM.

#### **TUESDAY, AUGUST 24**

**8:00 a.m. to 4:00 p.m.**

#### **REGISTRATION OPEN**

Location: Hilton Santa Fe Historic Plaza Hotel

Registered attendees can pick up their registration packets

**8:00 a.m.**

#### **OPA'S "SPIRIT OF SANTA FE" WET PAINT COMPETITION BEGINS!**

OPA's "Spirit of Santa Fe" Wet Paint Competition begins first thing Tuesday morning.

Registered attendees\* will vie for approximately \$15,000 in cash and merchandise awards.

A first, second and third place will be given in two categories: studio and plein air, with remaining awards given based on the discretion of the Juror of Awards.

Canvas must be officially stamped by OPA prior to painting. Maximum canvas size is 320 square inches. All paintings must be framed and wired for hanging to be in the competition & sale. Admission fees into any of the parks are not included and are the responsibility of the artist.

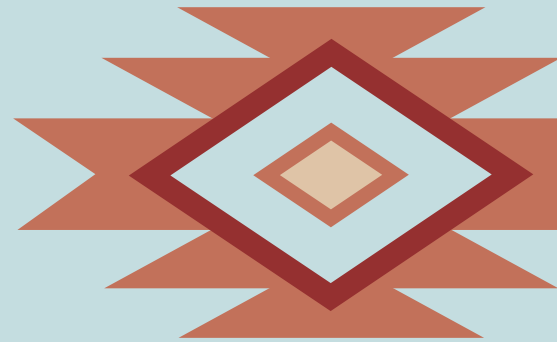
**\*Please Note:** Only attendees who have paid a full convention registration fee are eligible to participate in the Wet Paint Sale & Competition. Eligible convention attendees are guaranteed one painting in the exhibition; however, two or more paintings will be considered based on the number of participating attendees, so please come prepared. Please see the competition rules for the full details. **Wet Paint Rules can be found at:** [www.oilpaintersofamerica.com/2021wetpaint](http://www.oilpaintersofamerica.com/2021wetpaint)

**4:00 p.m. to 6:00 p.m.**

#### **OPA WELCOME RECEPTION SPONSORED BY SOUTHWEST ART MAGAZINE**

Location: Hilton Santa Fe Historic Plaza Hotel

Join us after a full day of painting for our Welcome Reception – poolside weather permitting. Here you will have the opportunity to catch up with old friends, meet new ones and enjoy some light bites and cool beverages.



## WEDNESDAY, AUGUST 25

7:00 a.m. to 4:00 p.m. **Registration Open**

Location: Hilton Santa Fe Historic Plaza Hotel

Registered attendees can pick up their registration packets and have their canvas stamped. On-site registration is available as well.

7:30 a.m. to 6:00 p.m.

### ROAD TRIP to Ghost Ranch and Georgia O'Keeffe Territory!

Experience the amazing natural beauty of New Mexico at Ghost Ranch, famously known as the home and studio of artist Georgia O'Keeffe. This peaceful 21,000-acre retreat and education center located close to the village of Abiquiu in north central New Mexico, will be our playground for the day.

Go Green and share a bus with fellow attendees as we embark on our adventure at 7:30 a.m. sharp.



Attendees will have the option to paint indoors or outdoors. Lunch will be provided and served in the air-conditioned dining hall. Attendees need to bring their own easel and supplies. The bus will depart Ghost Ranch at approximately 4:30 p.m. to return to Santa Fe.

**\*Please note:** Ghost Ranch offers several tours and activities for an additional fee. Check out their website at [www.ghost ranch.org](http://www.ghost ranch.org).

## THURSDAY, AUGUST 26

8:00 a.m. to 4:00 p.m. **Registration Open**

Location: Hilton Santa Fe Historic Plaza Hotel

Registered attendees can pick up their registration packets. On-site registration is available as well.

8:00 a.m. to 3:00 p.m.

### SOUTHWEST ART MAGAZINE'S PAMPERED PAINT OUT

Location: El Rancho de las Golondrinas Entry Fee: \$6

El Rancho de las Golondrinas is a living history museum located on 200 acres in a rural farming valley just 20 minutes south of Santa Fe. The Museum, dedicated to the history, heritage and culture of 18th and 19th century New Mexico, opened in 1972. Original colonial buildings on the site date from the early 1700s. In addition, historic buildings from other parts of northern New Mexico have been reconstructed at Las Golondrinas. Villagers clothed in the styles of the times show how life was lived on the frontier in early New Mexico.

Artists need to bring their own easel and supplies. Lunch will be provided and a place to cool off will be available for attendees. Please note, no bus transportation provided.

southwest  
art

5:00 p.m. to 7:00 p.m.

### DEADLINE FOR THE WET PAINT COMPETITION

Location: Hilton Santa Fe Historic Plaza Hotel



Time's up! Paintings should be framed and wired for hanging. OPA will provide more information later for attendees who prefer to pre-order a frame for pickup at the hotel.

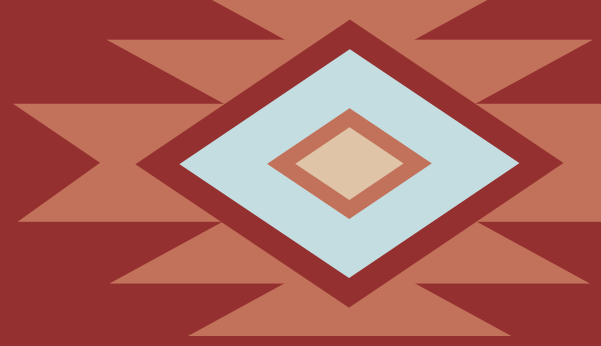
# FRIDAY, AUGUST 27

8:00 a.m. to 4:00 p.m.

## REGISTRATION & EXHIBITS OPEN

Location: Hilton Santa Fe Historic Plaza Hotel

Registered attendees can pick up their registration packets and have their canvas stamped. On-site registration is available as well.



8:30 a.m. to 10:30 a.m.

## PAINTING DEMONSTRATION WITH CINDY BARON OPAM

Location: Hilton Santa Fe Historic Plaza Hotel



Cindy is nationally recognized in both watercolors and oils, painting the grand landscapes of the western mountains and coastal shorelines.

Cindy was raised in South Bend, Indiana and has had the experience of living all over the country. Her art career started early when her 1st. grade teacher noticed her drawings, which lead to weekends assisting teachers through high school at the Art Center in town. A full-time artist, she conducts workshops across the country and internationally and has taught at the Rhode Island School of Design in their Continuing Ed., Department. Her passion in the arts began with pastels, which then led to watercolors and in 2000 was awarded Signature status in The American Watercolor Society. In 2012, she became a Signature member of Oil Painters of America and in 2018 a Master Signature of OPA. She is among a select group of artists who have received acknowledgment from her peers in both mediums. A plein-air painter enthusiast and her extensive travels have given Cindy an abundance of information and knowledge, which she shares with her students. She has become a highly sought-after instructor, teaching her skills around the country and Continuing Education classes to teachers. She has had the privilege of judging many awards shows and has been featured in numerous publications.

10:30 a.m. to 11:00 a.m. **BREAK**

11:00 a.m. to 12:30 p.m.

## OPA'S POWER COUPLE: A DISCUSSION WITH MASTER SIGNATURE ARTISTS DAVID LEFFEL & SHERRIE MCGRAW

Location: Hilton Santa Fe Historic Plaza Hotel



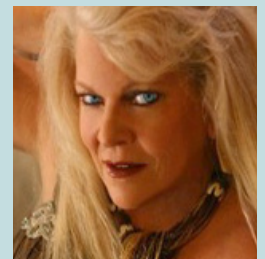
No introductions are necessary for this power couple who met at New York City's famed Art Students League back in the 1980's and have been together ever since. Each has achieved tremendous success since their early days back in NYC. Attendees will have a wonderful opportunity to hear firsthand from David and Sherrie on how they were able to create a supportive home and work environment that allowed each of them to become two of today's most recognized artists.

12:30 p.m. to 2:00 p.m.

## LUNCH sponsored by ShipandInsure

Location: Hilton Santa Fe Historic Plaza Hotel

Time to take a break and enjoy a tasty, boxed lunch sponsored by ShipandInsure, part of the North American Collectibles Association. Join EVP Elaine Lockard who will discuss why all OPA members who ship on a regular basis should take advantage of this special program which offers "real" insurance and substantial discounts with Federal Express – much more than you can ever receive on your own.



2:00 p.m. to 4:00 p.m.

## GROUP DEMONSTRATIONS

Stroll through the ballroom and take in some of OPA's top artists as they demonstrate their painting prowess!



<|>X<|>X<|>X<|>X<|>X<|>X<|>X<|>X<|>X<|>



### **Kurt Anderson OPA**

Working on a head study from life, Anderson will discuss color observation and color mixing - in finding just the right note to make what you are seeing come alive. He will demonstrate how to capture "the big look," the broad masses of light and dark

that express the shapes he is seeing. He will analyze those shapes in terms of gesture, expression, and anatomy, demonstrating how to recognize the qualities that so subtly express what is essential to the human form.

Kurt Anderson is the immediate past president of the Oil Painters of America. He is an oil painter who works in many genres - floral, landscape, figurative and portrait. His paintings have been featured in many of the leading galleries and museums in the country, and he has been awarded top honors in numerous national competitions. Anderson is the author or contributing author of eight books on painting, including his most recent book "*Expression by Design - The Art of Kurt Anderson.*" His studio gallery is located at the Torpedo Factory Art Center in Alexandria, Virginia.

<|>X<|>X<|>X<|>X<|>X<|>X<|>X<|>X<|>X<|>



### **Joe Anna Arnett OPA**

Joe Anna Arnett earned a BFA degree from the University of Texas. She then worked for Young & Rubicam Advertising in New York as a senior art director working on such accounts as Merrill Lynch and

the US Postal Service. She continued her studies in fine art at the Art Students League of New York for several years.

Arnett is a master artist on "Passport & Palette" the art instruction and travel series airing on PBS stations across the country. She not only appears on the show, but also produces and writes for the program.

In 1997, she became a Master Artist of the Artists in America Show at the Denver Historical Society Museum.

She has also exhibited at museums around the country and in 2006 she was honored by the Gilcrease Museum in Tulsa, OK as one of their featured artists in the Rendezvous exhibition. Arnett exhibited in the Prix de West show at the national Cowboy Hall of Fame for 14 years. She is a Signature member of Oil Painters of America and Laguna Plein Air Painters, and a Master Signature member of Plein Air Artists Colorado and an elected member of The Salmagundi Club. Arnett has participated in Plein Air Maui, Plein Air Southwest, and Paint Grand Traverse.

Arnett has written articles for *The Artist's Magazine*, *American Arts Quarterly*, *ART Ideas* and *Australian Artists Magazine* and has been featured in *The International Herald Tribune*, *Southwest Art*, *Western Art Digest*, *Art of the West* and the North Light books *Painting with Passion*, *The Best of Flower Painting I and II*, and North Light's *Sketchbook Confidential II*. She authored the North Light Book "*Painting Sumptuous Vegetables, Fruits and Flowers in Oil.*"

<|>X<|>X<|>X<|>X<|>X<|>X<|>X<|>X<|>



### **Michele Byrne**

Michele Byrne received a B.F.A. from Kutztown University and studied at the Pennsylvania Academy of Fine Arts. After working 20 years as a graphic designer, she turned to full time painting in 2001 and began plein air painting in 2006. In recent

years she has studied with some of the top painters in the country.

Byrne, who paints primarily in oils, most often explores the theme *The Art of Conversation*, painting cafés, street scenes, musicians, or any social situation where people gather to converse. Most of her work is done plein air. During the past few years, Michele has painted in Italy, Cuba, New York City and across the US. She now lives and paints in Santa Fe, NM. She has won numerous awards in her plein air and studio work and was featured on the January 2020 cover of *PleinAir Magazine* with an eight-page article titled "Adventures with a Palette Knife".

<|>X<|>X<|>X<|>X<|>X<|>X<|>X<|>X<|>X<|>X<|>X<|>



**William A. (Bill) Suys, Jr. OPA, PSS**  
Bill Suys is a Signature Member of both the Oil Painters of America and the Portrait Society of America whose greatest joy in life is standing behind his easel, indoors or out, with a brush in his hand. Bill creates studio

and plein air works using wide-ranging subject matter: portraiture/figurative, animals, landscape/architecture and still life. Suys paints, teaches, judges, lectures, and demonstrates. He has won a great many national and international awards and is proud to serve on the OPA Board of Directors.

Bill has participated in a number of group and one-man gallery shows as well as earned numerous awards, juried shows and has had wonderful editorial coverage in *Southwest Art*, *Fine Art Connoisseur*, *Plein Air* magazine and *American Art Collector* magazine. His devotion to his craft, participation in plein air invitationals and juried exhibitions, judging, and teaching, have helped him grow not just in reputation but as a soulful painter who believes in the power of both observation and introspection.

<|>X<|>X<|>X<|>X<|>X<|>X<|>X<|>X<|>X<|>X<|>



**Stuart Fullerton OPA**  
Signature member Stuart Fullerton grew up in north central Wisconsin and studied ancient Greek and Latin at Harvard College. After a year studying

archeology in Greece and Turkey, he returned to Harvard for law school.

Today Stuart works and paints in Chicago. He is a long-time member of the famous Palette and Chisel Club and of Plein Air Painters of Chicago. He is a member of the Board of Directors of the Oil Painters of America and of the Palette and Chisel Club. He recently became an OPA Signature member.

<|>X<|>X<|>X<|>X<|>X<|>X<|>X<|>X<|>X<|>X<|>



**Michele Usibelli OPA**

Michele's award-winning artwork has shown in both group and solo gallery exhibitions as well as regional, national and international juried exhibitions and museum auctions. Usibelli has won numerous

awards, including the OPA Silver Medal Award at the prestigious Salmagundi Club, NYC and the UCI Institute and Museum of California Art Award. She is honored to have her work in the permanent collection at the University of Alaska Fairbanks/Museum of the North and most recently, her painting "First Light, Pioneer Mill Smokestack", was acquired by the State of Hawaii for their permanent collection. Michele has followed her passion to teach, conducting ongoing workshops and art demonstrations throughout the US and internationally. She has proven to be a popular juror. Her artwork can be found in public and private collections throughout the world.

**8:30 p.m. to 10:00 p.m.**

## **OPA'S ART TRIVIA NIGHT**

Location: Hilton Santa Fe Historic Plaza Hotel

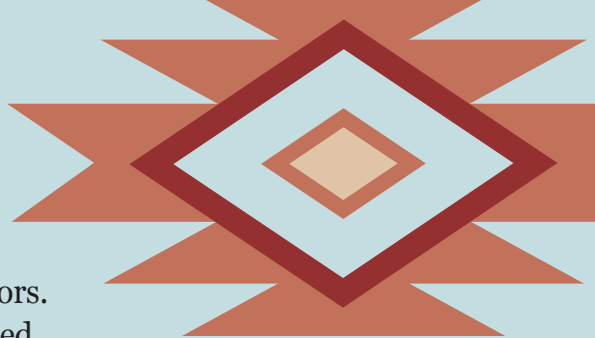
Join OPA for its first annual Art Trivia Night where we will test your knowledge on art related matters. No matter if you are a trivia aficionado or not – this night is all about having fun! Cash bar will be available.

# SATURDAY, AUGUST 28

**8:00 a.m. to 4:00 p.m. Registration & Exhibits Open**

Location: Hilton Santa Fe Historic Plaza Hotel

Attendees can pick up their registration packets and visit the exhibitors. Artists who visit each exhibitor and have their exhibitor cards stamped are eligible to enter the special exhibitor raffle basket drawing!



**8:30 a.m. to 11:00 a.m.**

## **PAINTING DEMONSTRATION WITH MARY QIAN OPAM**

Location: Hilton Santa Fe Historic Plaza Hotel



Mary Qian OPAM received a BFA from the highly regarded art program at Brigham Young University. After a brief stint working in 3D graphics, Mary took the leap to painting full-time and has never looked back. She is OPA's 2010 Gold Medal National Exhibition recipient, as well as the 2009 winner of the prestigious Dorothy Mellin Driehaus Fellowship Award for Midwestern Artists. Not content to rest on her laurels, Mary can often be found painting or drawing at Chicago's iconic Palette & Chisel. Her true joy is painting people and she hopes that her painting demonstration will convey that emotion to her audience.

**11:00 a.m. to 11:30 a.m. BREAK**

Location: Hilton Santa Fe Historic Plaza Hotel

**11:30 a.m. to 1:00 p.m. LUNCH WITH EXHIBITORS**

Location: Hilton Santa Fe Historic Plaza Hotel

**1:00 p.m. to 3:30 p.m.**

## **PAINTING DEMONSTRATION WITH SHERRIE MCGRAW OPAM**



Sherrie is one of today's most pre-eminent artists and teachers. Raised in Oklahoma, Sherrie was encouraged by her first instructors to move to NYC to attend the famed Art Students League of New York. She studied with many notable teachers, including renowned OPA Master Signature artist David A Leffel. Within a few years, Sherrie was already finding success and winning awards in several New York art institutions. By the time she was 30, she was on the faculty at the Art Students League. In 2010 she received an honorary doctorate from the Academy of Art University in San Francisco and in 2015, the Butler Institute awarded her their Medal of Honor for Lifetime Achievement in American Art.

Today, her work can be found in several major institutions including the Butler Institute of American Art and the National Cowboy and Western Heritage Museum, as well as numerous collections including Senator John Warner, The Mellon and Forbes families, Howard Terpning, John Mellencamp, and George Carlson.

Sherrie is the author of the highly acclaimed book, *The Language of Drawing*, and is presently writing her second book, which will be devoted to visual concepts in painting.

**3:30 p.m. to 4:00 p.m. BREAK**

**4:00 p.m. to 5:15 p.m.**

## **UP CLOSE AND PERSONAL WITH ALBERT HANDELL OPAM**

Location: Hilton Santa Fe Historic Plaza Hotel

Join Master Signature artist Albert Handell as he talks about his long-term and highly successful career.



He will also share with attendees some of his favorite articles from his popular monthly blog fittingly called “Ask Albert”. These articles are sure to inspire and offer artists an opportunity to engage in a meaningful conversation with one of today’s most admired artists.

Artist Albert Handell OPAM is not only a Master Signature member of OPA but was also elected to the Pastel Society of America’s Hall of Fame in 1987. His vast experience and success in both oils and pastels sets him apart from others and provides his students a unique perspective. His extensive painting and teaching career spans over forty years and includes over 30 solo exhibitions and upwards of 70 prizes and awards. He has authored or co-authored five instructional art books on pastel and oil painting and has created several video DVD’s including a newly released video by Streamline called “Painting in Oil.”

**5:00 p.m. to 8:00 p.m. BREAK**

**8:00 p.m. to 10:30 p.m.**

## **AMERICAN ART COLLECTOR MAGAZINE’S CLOSING PARTY**

Location: TBD



*American Art Collector* Magazine’s closing party is always one of the most memorable convention highlights! OPA is on the lookout for the best venue to hold this fun evening so stay tuned for more details.

## **SUNDAY, AUGUST 29**

**8:30 a.m. to Noon Registration & Exhibits Open**

Location: Hilton Santa Fe Historic Plaza Hotel

Attendees can pick up their registration packets and visit the exhibitors. Artists who visit each exhibitor and have their exhibitor cards stamped are eligible to enter the special exhibitor raffle basket drawing!


**9:00 a.m. to 11:00 a.m.**

## **THE DYNAMIC DUO: PAINTING WITH MASTER SIGNATURE ARTISTS LOUIS ESCOBEDO AND JOHN MICHAEL CARTER**

Location: Hilton Santa Fe Historic Plaza Hotel

Longtime friends and OPA Master Signature members Louis Escobedo and John Michael Carter will share the stage as they demonstrate and talk about their painting process. Both have received OPA’s prestigious National Gold Medal Award and Louis has the rare distinction of being only one of two artists to have received the Gold Medal twice.





Audience members will be in for a real treat as these two compadres share their advice and maybe have a little fun along the way.

**Louis Escobedo** was born in Sweetwater, Texas. He received a BFA in Advertising Art from the State University in Huntsville, Texas. After graduation he began his career as a technical illustrator and then a freelance illustrator. As a freelance illustrator in 1981 he received a gold medal from the Society of Illustrators in New York and several other awards from many organizations in Texas. In 1985, he shifted his professional focus from illustration to fine art. He became adept experimenting with composition and design and seeing life and objects from a philosophical point of view characterized by beauty and thoughtfulness. Around 1990 his new career in fine art took off.

He is one of only two artists to have received the OPA Gold Medal award twice in the last 27 years. In 2013 Louis became an OPA Signature Member and a Master Signature artist in 2019. Louis and his wife Yolanda live in Santa Fe, New Mexico.

**John Michael Carter** was born in Chicago. He showed an interest in drawing at an early age and began his studies at 15 with his father E.L. Carter, a commercial artist and illustrator. After graduation from high school, he attended the American Academy of Art in Chicago. In 1970 Carter continued his studies at the Art Center College of Design in Los Angeles. There he studied the major classical schools of drawing and painting with Reynolds Brown, Harry Carmean, and Lorser Feitelson. He received his B.F.A. in 1972. His wide range of subject matter covers landscapes, still life, figurative painting, and portraiture. His portraits include senators, governors, university presidents as well as corporate and civic leaders. His thorough classical training and experience in drawing and painting gives him the technical expertise for superb instruction. He won OPA's National Exhibition Gold Medal award in 2004 and has garnered several other awards from OPA since that time. He has competed in many prestigious shows and has more often than not come away with awards including a three-time finalist in the Portrait Society of America International Competition and Best of Show at the Hoosier Salon in 2012.

**11:00 a.m. to 11:30 a.m.**

### **LAST CALL FOR EXHIBITORS!**

**Location: Hilton Santa Fe Historic Plaza Hotel**

**11:30 a.m. to 12:30 p.m.**

### **OPA CRITIQUE SESSION WITH THE MASTERS**

**Location: Hilton Santa Fe Historic Plaza Hotel**

Understanding what top artists consider to be a painting's strengths and weaknesses is one of the best ways to improve your own work.

Join some of our Master Signature artists for this on-stage group critique. If you would like your painting to be considered for this critique session, please email your image to [mail@oilpaintersofamerica.com](mailto:mail@oilpaintersofamerica.com).



# 1-DAY OR 2-DAY PRE-CONVENTION WORKSHOPS

Why not make it a full week in Santa Fe by attending one of OPA's pre-convention workshops being offered by the following local OPA artists: Michele Byrne, Louis Escobedo OPAM and Albert Handell OPAM. A brief description of what you can expect to learn in the workshops can be found below. Please note, attendees are responsible for bringing their own easel and supplies. **Each session will break for lunch so please be sure to bring either a sack lunch or buy lunch off property\***

**IMPORTANT:** Current CDC and New Mexico guidelines will be followed. OPA hopes that most restrictions will be lifted by the end of August but please be prepared and willing to wear a mask if regulations require it.

## **MICHELE BYRNE WORKSHOP: IMPRESSIONISTIC OIL PAINTING WITH PALETTE KNIFE AND BRUSH**

**Two-day workshop on Monday, August 23 & Tuesday, August 24**

**Time:** 9:00 a.m. to 4:00 p.m.  
with lunch break\*

**Location:** Outdoors in and around Santa Fe

**Cost:** \$285

**Maximum Students:** 12 -15 students

**Skill level:** Intermediate to advanced

Please join Michele Byrne for two days of fun and inspiration! In this workshop attendees will learn how to create dramatic paintings with a palette knife and impressionistic brushwork. Learn how to design a painting through value and strong composition that will lead your eye through the painting to tell a story. Day #1 will focus on reviewing the basic rules of perspective and creating a strong value study. Day #2 will concentrate on various techniques on how to hold the knife and make a great variety of marks, as well as

different ways you can create interest through paint manipulation and varied brushwork. Each morning, Michele will begin with a short demo with one-on-one student time in the afternoon.

## **LOUIS ESCOBEO OPAM: HOW TO CREATE A SUCCESSFUL STILL LIFE**

**Two Day Workshop on Monday, August 23 & Tuesday, August 24**

**Time:** 9:00 a.m. to 4:00 p.m.  
with lunch break\*

**Location:** Louis Escobedo's Studio

**Cost:** \$400

**Maximum Students:** 10

**Skill level:** All skill levels welcome

Does your still life compositions sometimes fall flat? It takes more than being a skilled painter to create a winning still life. This 2-day workshop will cover how to set up a strong composition, from color and value, and discuss proper lighting. All essential elements to creating an appealing work of art.

## **ALBERT HANDELL OPAM: DEMONSTRATION & PERSONAL CRITIQUE DAY**

**One-Day Workshop on Monday,  
August 23**

**Time:** 9:30 a.m. to 5:00 p.m.  
with lunch break

**Location:** Albert Handell's Studio - 1109 Don Gaspar Ave. Santa Fe 87505

**Cost:** \$125

**Maximum Students:** 15

**Cell:** 505-603-1524

Albert Handell OPAM invites OPA members and guests to his home studio for a great day of learning and camaraderie. The morning begins with an interactive painting demonstration by Albert. He will demonstrate how to establish a quick drying transparent underpainting followed by over painting with brush and palette knife, followed by Q&A and a critique session.

Attendees are asked to bring 3-5 (completely dry) unframed oil paintings for Albert to critique. He will choose one and ask the artist to photograph that painting. With the artist's permission, Albert will put on a retouch varnish to bring up all the colors as they were when wet and make changes to the painting as if it were his own, illustrating how you can achieve a better painting. Then he will ask for the painting to be photographed again. At this point the artist will have the choice to either keep it as a learning lesson or remove what Albert painted and try to paint it with Albert's help at the easel. It is a very good learning experience, for one and all. Please bring your lunch with you. You will have access to Albert's house and grounds.



# NATIONAL CONVENTION

## AUGUST 24 – 29, 2021

### SANTA FE, NEW MEXICO

#### ADVANCED REGISTRATION INFORMATION

OPA has customized the registration process to meet your convention needs. Registration includes options to attend the entire convention or individual days. Attendees must pay the full registration fee to participate in the Wet Paint Sale and Competition.

#### HOW TO REGISTER FOR THE CONVENTION

**To register online,** visit [www.oilpaintersofamerica.com](http://www.oilpaintersofamerica.com).

Click on the National Convention Registration link found on the OPA home page.

**To register by mail,** complete this registration form and mail it into OPA, PO Box 2488, Crystal Lake, IL. 60039-2488, with a check or credit card information. Please, one registrant per form. Students must provide proof of student status.

#### EARLY BIRD DISCOUNT!

Save money and secure your spot by registering right now. Last day to receive the early bird discount is Tuesday, June 1. Mailed in registration forms must be postmarked by Tuesday, June 1 to receive the Early Bird discount and must arrive in the OPA office no later than Friday, June 11, 2021.

**Please Note: Full registration IS required to participate in the Wet Paint Sale & Competition. A one-day registration includes all activities and social events listed for that day.**

**ADDITIONAL REGISTRATION NOTES** - Advanced Registration Deadline by Mail is Monday, August 16 or **ONLINE by Friday, August 20.** To register via mail, complete the registration form and mail it into OPA, PO Box 2488, Crystal Lake, IL. 60039-2488 with a check or credit card information. Please, one registrant per form. Students must provide proof of student status.

**Online registration is available at [www.oilpaintersofamerica.com](http://www.oilpaintersofamerica.com). Click on the National Convention Registration link found on the OPA home page.**

**Onsite Registration begins at 8:00 a.m. on Tuesday, August 24, 2021.** Registration hours are listed on the registration schedule below. OPA members must have paid their 2021 membership dues to receive membership rates.

**Cancellation/Refunds:** An 80% refund of registration fees is allowed if a written request is sent to OPA headquarters 14 days prior to the scheduled start date of the convention. No refunds are made after this date. Requests for refunds must be postmarked no later than Monday, August 9, and must arrive in the OPA office no later than Monday, August 16. OPA assesses a \$25 administrative charge for all returned checks. NO refunds will be issued onsite or for failure to attend.

**Confirmation:** Online registrants should receive a confirmation email immediately upon registering. Mailed registrations will receive an emailed confirmation within 10-14 days from receipt of your registration. If you require a mailed confirmation, please make the appropriate indication on your registration form. Your confirmation will serve as your receipt.

**Students:** Students eligible for the reduced rate must provide a photocopy of a valid student ID from an accredited, degree granting college or university.

**Special Requests:** If you have any special requirements under the ADA, please e-mail your request to Rosemary Murray at [mail@oilpaintersofamerica.com](mailto:mail@oilpaintersofamerica.com). Special needs must be received at the OPA office 30 days before opening day of convention to assure reasonable accommodation.

**Wet Paint Rules can be found at:** [www.oilpaintersofamerica.com/2021wetpaint](http://www.oilpaintersofamerica.com/2021wetpaint)

Day	Time	Location
<b>Tuesday, August 24</b>	8:00 a.m. to 4:00 p.m.	Hilton Santa Fe Historic Plaza Hotel
<b>Wednesday, August 25</b>	7:00 a.m. to 4:00 p.m.	Hilton Santa Fe Historic Plaza Hotel
<b>Thursday, August 26</b>	8:00 a.m. to 3:00 p.m.	Hilton Santa Fe Historic Plaza Hotel
<b>Friday, August 27</b>	8:00 a.m. to 4:00 p.m.	Hilton Santa Fe Historic Plaza Hotel
<b>Saturday, August 28</b>	8:00 a.m. to 4:00 p.m.	Hilton Santa Fe Historic Plaza Hotel
<b>Sunday, August 29</b>	8:30 a.m. to Noon	Hilton Santa Fe Historic Plaza Hotel



**OIL PAINTERS of AMERICA.**  
Dedicated to the Preservation of Representational Art

# NATIONAL CONVENTION

**AUGUST 24 – 29, 2021**

**SANTA FE, NEW MEXICO**

Registration Type	Early Bird Through June 1	Advanced Through Aug 20	Onsite August 24-29	Total
<b>Full Registration includes</b> wet paint sale & competition, OPA tradeshow, all educational presentations and social events including the Welcome Reception and AAC's Celebration Party.				
<input type="checkbox"/> OPA Member - Full Registration	\$375	\$425	\$475	
<input type="checkbox"/> Non-Member* - Full Registration	\$400	\$450	\$500	
<input type="checkbox"/> Student - must be a part-time or full-time student under the age of 25 and provide a valid student ID		\$200	\$225	
<b>Please opt in or out!</b> Do you want to take the bus to Ghost Ranch? Please check one: <input type="checkbox"/> YES <input type="checkbox"/> NO		\$25	N/A	
<b>Daily Registration includes</b> all convention events and social activities on the specified day. **A Full Registration is required in order to participate in the wet paint sale & competition. **				
<b>Daily Registration</b>		<b>Advanced</b>	<b>Onsite</b>	
<input type="checkbox"/> One Day - Friday, August 27		\$160 member/ \$170 non-member	\$170 member/ \$180 non-member	
<input type="checkbox"/> One Day - Saturday, August 28		\$160 member/ \$170 non-member	\$170 member/ \$180 non-member	
<input type="checkbox"/> One Day - Sunday, August 29		\$160 member/ \$170 non-member	\$170 member/ \$180 non-member	
<b>Pre-Convention Workshops</b> <b>Artist is responsible for bringing easel and all supplies</b>		<b>Advanced</b>	<b>Onsite</b>	
<input type="checkbox"/> Albert Handell OPAM - One Day Workshop Monday, August 23		\$125	N/A	
<input type="checkbox"/> Louis Escobedo OPAM - Two Day Workshop "How to Create a Successful Still Life" Monday, August 23 & Tuesday, August 24		\$400	N/A	
<input type="checkbox"/> Michele Byrne - Two Day Workshop "Impressionistic Oil Painting w/Palette Knife & Brush" Monday, August 23 & Tuesday, August 24		\$285	N/A	
<b>Ala Carte</b>				
<b>Individuals/Spouses not registered to attend the convention can register for the following events</b>				
<input type="checkbox"/> Southwest Art Magazine's Welcome Reception Tuesday, August 24 (Member & Non -Member)		\$40	\$50	
<input type="checkbox"/> Bus to and from Ghost Ranch plus lunch		\$60	N/A	
<input type="checkbox"/> Pampered Paint Out Lunch at El Rancho de las Golondrinas <b>(does not include \$6 admission)</b>		\$25	\$40	
<input type="checkbox"/> American Art Collector's Closing Party Saturday, August 28 (Member & Non-Member)		\$60	\$75	
<b>Please type or print clearly and use black or blue ink. (Please, only one registrant per form)</b>			<b>TOTAL DUE:</b>	

- OPA Member   
  OPA Student Member   
  Non-member student  
 Non-member artist   
  Non-member collector   
  Non-member guest/spouse

Last Name \_\_\_\_\_ First \_\_\_\_\_ M.I. \_\_\_\_\_

Address \_\_\_\_\_ City \_\_\_\_\_ State \_\_\_\_\_ Zip \_\_\_\_\_

Phone (\_\_\_\_) \_\_\_\_\_ E-mail \_\_\_\_\_

Method of Payment:  Check  MasterCard  Visa  Discover  American Express **TOTAL DUE:** \_\_\_\_\_

**Credit Card Number:** \_\_\_\_\_ **Expiration Date:** \_\_\_\_/\_\_\_\_/\_\_\_\_ **CVV:** \_\_\_\_  
 (Please print clearly)

Print Name on Card \_\_\_\_\_ Signature \_\_\_\_\_

**If credit card billing address is different from mailing address:**

Address \_\_\_\_\_ City \_\_\_\_\_ State \_\_\_\_\_ Zip \_\_\_\_\_

\*Non-member artists may apply for membership onsite to qualify for member rate.  
 Please bring 2 photos of your recent work to be eligible.  
 Or apply now at: [www.oilpaintersofamerica.com](http://www.oilpaintersofamerica.com)

## LODGING AND TRAVEL INFORMATION

**Lodging Information:** OPA has reserved a limited number of rooms at the Hilton Santa Fe Historic Plaza Hotel.  
 Please make your reservations early as space is limited.  
 Cut-off date to receive this special rate is Friday, July 23, and based on room availability,



### Hilton Santa Fe Historic Plaza Hotel

Reservation line: 1-800-774-1500 Group Code: OILPOA

#### Room Rates:

**Double Queen Guest Room \$149 + tax**

**King Guest Room \$149 + tax**

#### PLEASE NOTE:

- Room rate includes breakfast for up to two people per room.
- Resort fee is waived.
- Group rates are offered three (3) days before and after event dates based upon availability.
- Reduced parking \$5.00 per day.
- Complimentary Wi-Fi in guestrooms.
- Complimentary Fitness Center and Business Center.

**Travel Information:** The closest airport is the Santa Fe Regional Airport which is approximately 10 miles from downtown Santa Fe. Or you can fly into the Albuquerque International Sunport and drive to Santa Fe which is about a 1-hour drive.

## TAKE NOTE OF THESE IMPORTANT ADDRESSES!

**Hilton Santa Fe Historic Plaza Hotel**  
 100 Sandoval Street  
 Santa Fe, NM 87501  
**Phone: 505-988-2811**  
**Reservations: 1-800-774-1500**  
**Code OILPOA**

**Ghost Ranch**  
 280 Private Drive 1708 Highway  
 US-84, Abiquiu, NM 87510  
**Phone: 505-685-1000**

**Southwest Art Magazine's  
 Pampered Paint Out @  
 El Rancho de las Golondrinas**  
 334 Los Pinos Road  
 Santa Fe, NM 87507  
**Phone: 505-471-2261**

**Questions? Please Call OPA at 815-356-5987 or email at: [mail@oilpaintersofamerica.com](mailto:mail@oilpaintersofamerica.com)**  
 Tag us in your convention photos #OPA2021NationalConvention or @oilpaintersofamerica